

JACKPINE SNOWMOBILE CLUB TRAIL SYSTEM

Legend

- TOP Trunk Trails
- TOP Connector Trails
- Local Trails
- Railway
- Highway
- Primary Road
- Secondary Road
- Tertiary Road
- Transmission Line
- Natural Gas Pipeline
- Provincial Park
- Streams
- Lake/River
- Wetland



Assumptions for OFSC Trail Use.

As an off-road experience, snowmobiling is an inherently risky activity. The OFSC assumes every rider using an OFSC Prescribed Trail understands and accepts that:

USE TRAIL AT YOUR OWN RISK

- YOU must know and obey the Motorized Snow Vehicles Act (Ont.)
- YOU must use caution at all times
- Emergency and cell phone service may not be available

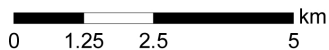
PROPERTY OF ONTARIO FEDERATION OF SNOWMOBILE CLUBS

- All snowmobiles will be operated under a lawful trail use permit;
- All operators and passengers willingly use the trails at their own risk;
- Operators and passengers know and will obey the law, including The Occupiers' Liability Act, The Motorized Snow Vehicles Act and the Trespass to Property Act;
- It is recognized and accepted that snowmobiling is essentially an off-road activity taking place in an unpredictable natural environment;
- The OFSC is a volunteer-based organization with finite resources and manpower;
- It is not practical, possible or desirable to maintain all trails uniformly or to remove all potential hazards;
- The OFSC is providing the privilege of trail access without any guarantee of service or quality;
- Operators and passengers will not consume alcohol prior to or while using the trails;
- Operators and passengers will be prudent and responsible and shall ensure that snowmobiles are operated with appropriate care and control at all times;
- Operators and passengers know how to snowmobile competently and understand that the operation of snowmobiles requires full cognitive abilities;
- Weather conditions affect trails and snowmobile operation and they may change without warning;
- The maximum speed on trails is 50 km/h unless reduced by law or conditions;
- There may be permitted users on the trail other than snowmobilers;
- Operators will stay to the right of the trail, notwithstanding that there are no centre lines;
- Operators know that there may be grooming or other maintenance activities under way at any time of the day or night which may take up the whole or any part of the trail and have the right of way;
- Operators and passengers know that snowmobile trails are not engineered highways;
- All operators and passengers know and will adhere to the principles published as the Safe Riders Pledge by the International Snowmobile Manufacturers' Association;
- Operators and passengers are aware that there are generally no legal requirements for signage on trails and, when provided, it is only for assistance and convenience;
- Operators and passengers know that snowmobiling on OFSC trails is regarded as a family-oriented activity;
- Operators and passengers know the unique and particular dangers of ice crossing;
- The grooming and maintenance of trails, when provided, is meant solely to enhance the comfort and enjoyment of the safe and prudent operators and passengers;
- Operators and passengers will dress appropriately for all conditions and will have appropriate safety and emergency equipment at all times.

Trail Distance (km)

All distances on this map are in kilometers. (1 km = 0.62 miles)

1:100,000



This map is intended only as a guide. The Jackpine Snowmobile Club accepts no responsibility or liability for any discrepancies, inaccuracies, errors or omissions which may occur. For actual trail conditions encountered on any trails shown on this map, or for any resulting loss or damage. Please note distances are approximate and subject to change at any time.

Copyright © 2010 Jackpine Snowmobile Club



ONTARIO FEDERATION OF SNOWMOBILE CLUBS
www.ofsc.on.ca

Snowmobilers Care About Our Environment

Keeping Nature Beautiful

Canadian Council of Snowmobile Organizations

GO SNOWMOBILING!

www.ofsc.on.ca

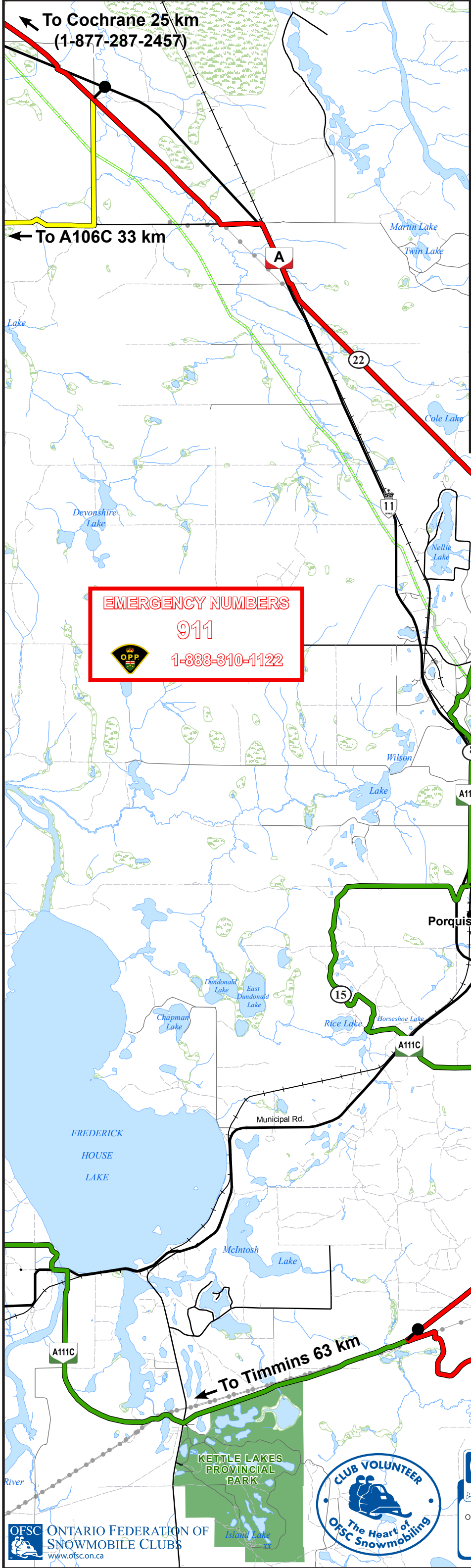
We're building more than just great trails!

EMERGENCY NUMBERS

911

1-888-310-1122

See reverse of this page to see Trail Map of Iroquois Falls



OFSC ONTARIO FEDERATION OF SNOWMOBILE CLUBS
www.ofsc.on.ca



OFSC

PRESCRIBED TRAIL

IT'S THE LAW!

It is the law in Ontario for recreational sleds* using OFSC Prescribed Snowmobile Trails to have and display a valid Snowmobile Trail Permit. Fines for failure to comply range from a minimum of \$200 to a maximum of \$1000. *exemptions or partial exemptions for specific user groups.



TRAIL PATROL

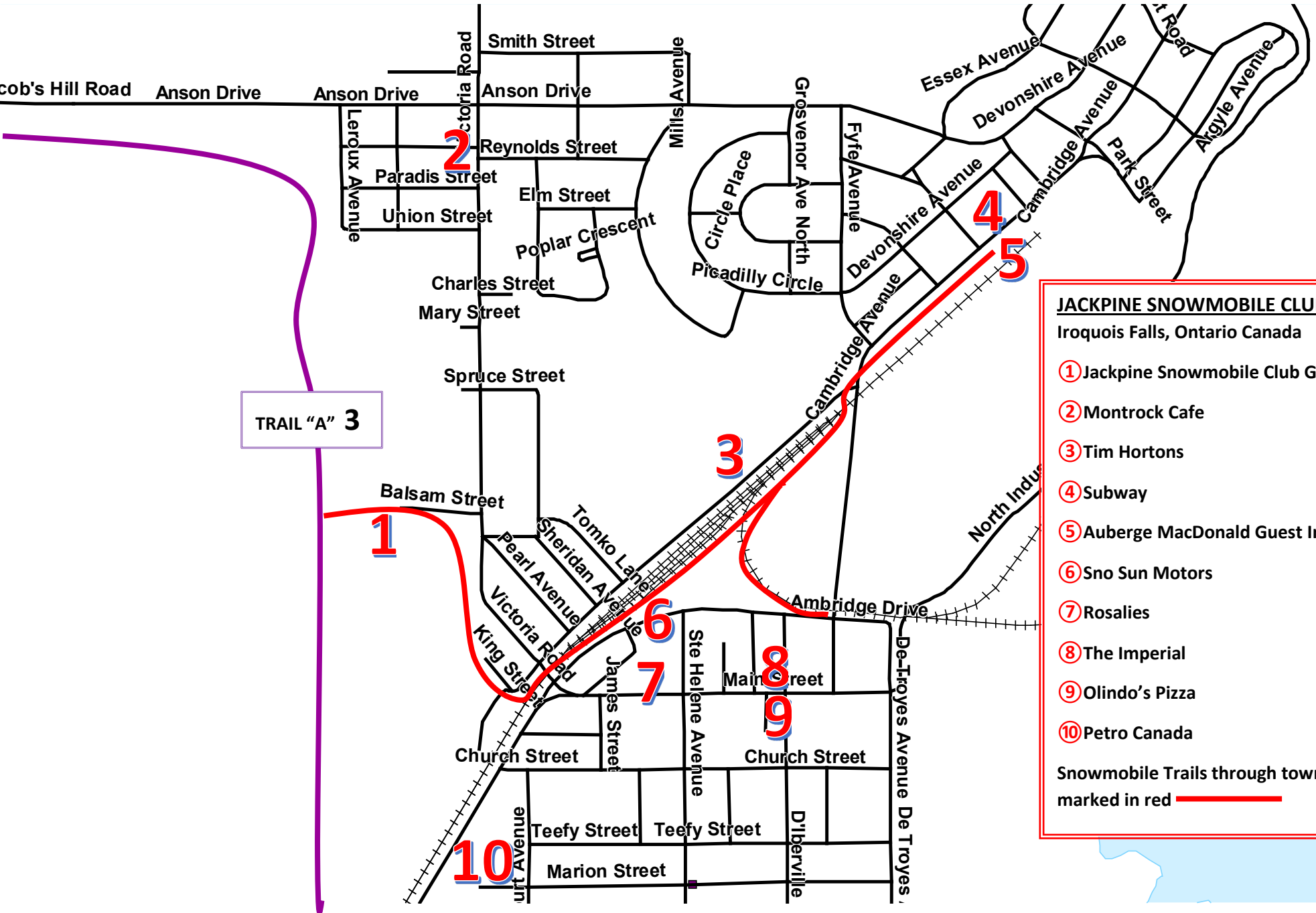
OFSC

There For You!

2010 Checkpoint Weekends

- January 29th to 31st
- February 5th to 7th
- February 12th to 14th

www.ofsc.on.ca



JACKPINE SNOWMOBILE CLUB
 Iroquois Falls, Ontario Canada

- ① Jackpine Snowmobile Club Garage
- ② Montrock Cafe
- ③ Tim Hortons
- ④ Subway
- ⑤ Auberge MacDonald Guest Inn
- ⑥ Sno Sun Motors
- ⑦ Rosalies
- ⑧ The Imperial
- ⑨ Olindo's Pizza
- ⑩ Petro Canada

Snowmobile Trails through town marked in red ———